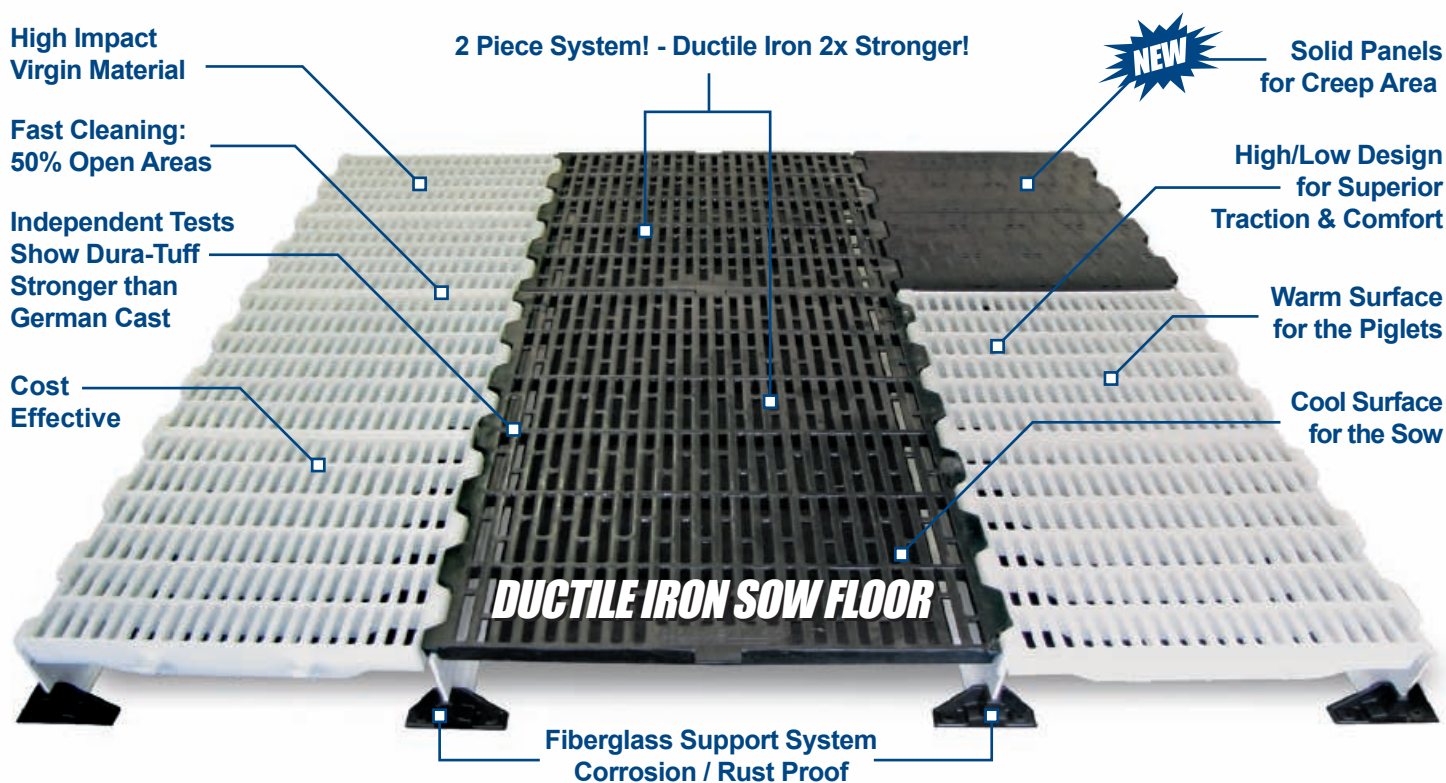


DURA-TUFF DUCTILE IRON FARROWING FLOOR



REDUCES CRUSH FACTOR:

- The plastic/ductile combination provides a cool surface for the sow while the plastic creep area provides a warm surface for the piglets.
- This combination will keep the piglets on the warm plastic surface and reduce the crush factor.

STRENGTH:

- New Ductile Iron Interlocking Floor twice as strong as grey iron used by other floors in the market.
- Independent test show Dura-Tuff ductile iron flooring is stronger than cast iron floors made in Germany.
- The plastic sow floor is made from a high impact virgin polypropylene material and its heavy-duty design will hold up in any farrowing operation.

TRACTION / SURFACE:

- The top of our ductile iron flooring has a high/low design for superior traction.
- There are no rough edges; the surface provides a cool comfortable environment for the sow.
- The plastic sow floor surface features raised traction squares to aid sows in getting up and down.

FLEXIBILITY:

- Designed to fit most farrowing crate dimensions.
- Available in raised or flat interlocking ductile iron sow floor.
- Ductile iron or plastic sow centers available.
- New solid panel for creep area available.

SUPPORT SYSTEM:

- Superior fiberglass support system that clear spans up to 8 feet.
- The fiberglass beam is corrosion/rust proof and price to compete with steel supports.
- For clear spans over 8 feet we offer a leg support system.
- Dura-Tuff farrowing floor systems will also work with 1/4" steel beams. The steel beams must be hot dip galvanized or stainless.



DURA-TUFF® FLOORING SYSTEM COMPONENTS



NEW
Solid Creep Floor

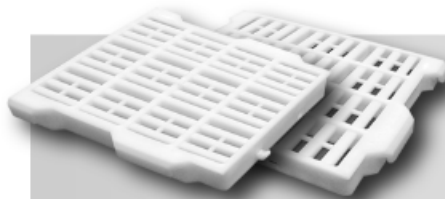
◀ DURA-TUFF PLASTIC CREEP & NURSERY FLOOR

- 24" x 24" (610mm x 610mm) Open
- 24" x 18" (610mm x 458mm) Open
- 18" x 24" (458mm x 610mm) Open or Solid
- 18" x 18" (458mm x 458mm) Open or Solid

STOCK COLORS:
Black or White
(Special colors available by quote)

▶ PLASTIC BEAM MOUNTING PLATES

Used wherever beam comes in contact with concrete.
Used to protect and stabilize the fiberglass beams.

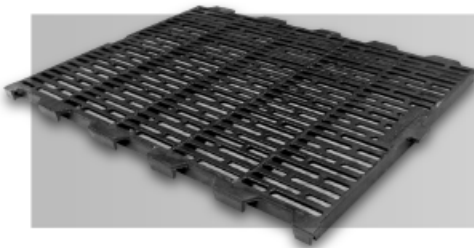
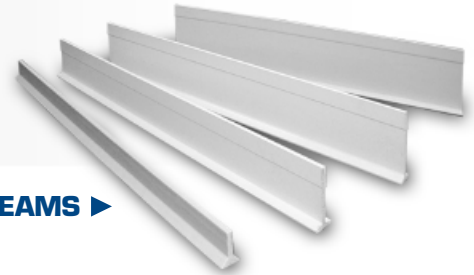


◀ DURA-TUFF PLASTIC SOW FLOOR

- 12" x 12" (305mm x 305mm)
- **STOCK COLORS:** Black or White
(Special colors available by quote)

▶ DURA-TUFF FIBERGLASS SUPPORT BEAMS

- 1/4" x 5" (7mm x 127mm)
- 1/4" x 4" (7mm x 101.6mm)
- 1/4" x 3" (7mm x 76.2mm)
- 1/4" x 1-1/2" (7mm x 38.1mm)

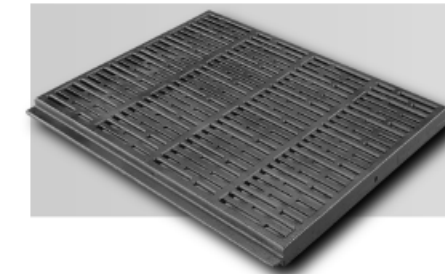
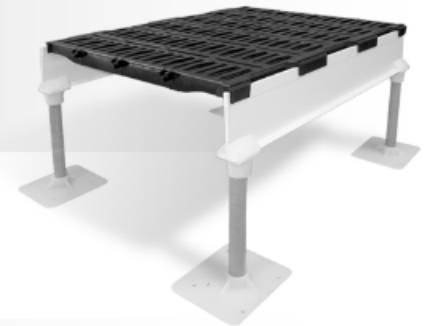


◀ DURA-TUFF RAISED & FLAT INTERLOCKING DUCTILE IRON SOW FLOOR

- 24" x 42" (610mm x 1067mm) Flat Ductile
- 24" x 48" (610mm x 1219mm) Flat Ductile
- 24" x 36" (610mm x 914mm) Flat Ductile
- 24" x 24" (610mm x 610mm) Raised or Flat Ductile
- 24" x 18" (610mm x 458mm) Raised or Flat Ductile

▶ DURA-TUFF LEG SUPPORT SYSTEM

Used for additional support with our fiberglass beam when clear span exceeds more than 10 feet.



◀ DURA-TUFF RAISED & FLAT OVERLAPPING CAST IRON SOW FLOOR

- 24" x 28" (610mm x 711mm) Raised Only
- 24" x 28" (610mm x 711mm) Floor Patch, 3-Sided Overlap, Flat Only
- 24" x 34" (610mm x 864mm) Raised Only
- 24" x 42" (610mm x 1067mm) Flat or Raised
- 24" x 48" (610mm x 1219mm) Flat or Raised

▶ ASSORTED MOUNTING ACCESSORIES

NEW! Slat-Armor Floor Guard, Dura-Lock Anchoring System, J-Bolts, Locking Nuts, Bolts, Washers and Stabilizer Bars **Assorted Accessories not shown to scale.*

